

# A Whitmoreite Gallery

Tom Mortimer & Bob Wilken

In December 2024 the New England mineral community lost a most outstanding member of our hobby. Through his ownership of the Palermo mine, lectures, writings, and support of mineral clubs, Robert Whitmore embraced all facets of mineralogy. Many mineral collections, local and world-wide, have specimens extracted by Bob from the Palermo mine, Groton, New Hampshire. This mine has the greatest species diversity of any in New Hampshire (159 – mindat.org 2025) and is the source of many specimens in the collections of MMNE members. Throughout his lifetime Bob was always most generous with Palermo material and collector access to the Palermo mine.

In 1974, Bob was honored with the assignment of whitmoreite to a new iron phosphate species with the Palermo No. 1 mine as the type locality. In recognition to his contributions to the micro-mineral hobby, the MMNE voted to sponsor the whitmoreite page on the mindat.org web site, <https://www.mindat.org/gallery.php?loc=3942&min=4281>.

In this February newsletter we celebrate Bob's legacy with a photo gallery of whitmoreite. These specimens are from the collections of Tom Mortimer and Bob Wilken; photos by the authors.

These photos may be viewed in greater detail on the mindatnh.org web site: <https://www.mindatnh.org/Whitmoreite%20sheet.html>.



Robert Whitmore. 1936 - 2024



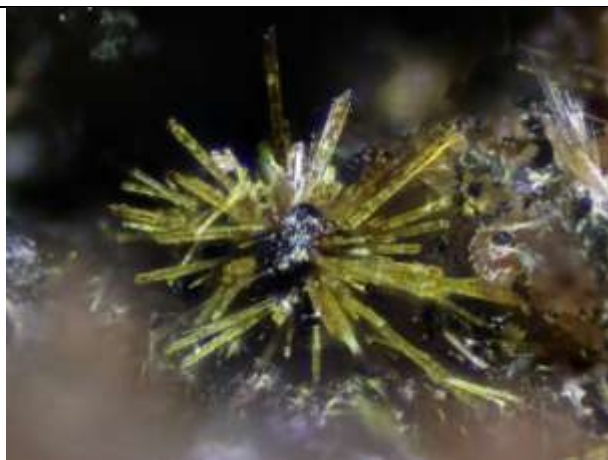
Palermo Mine 0.7 mm whitmoreite "naval mine" on siderite



Palermo Mine A 1 mm "naval mine"



Palermo Mine 1 mm cluster of Whitmoreite crystals



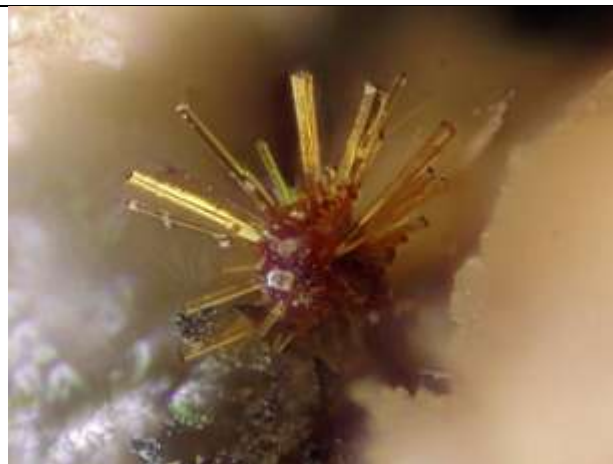
Chickering Mine 0.6 mm field of view. Naval mine habit.



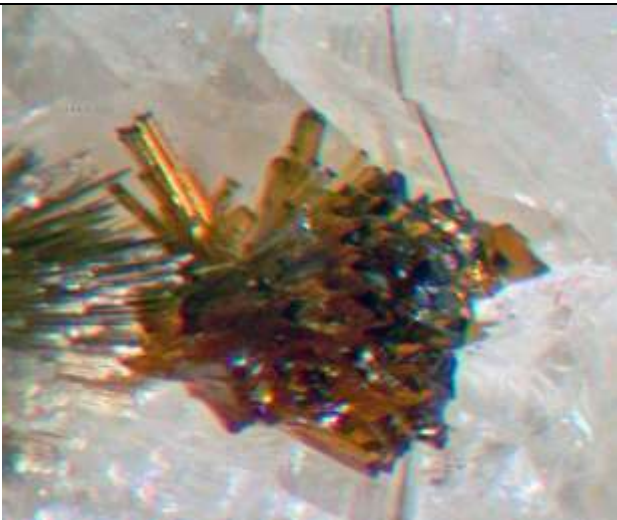
Chickering Mine 2.5 mm field of view. Onion habit whitmoreite



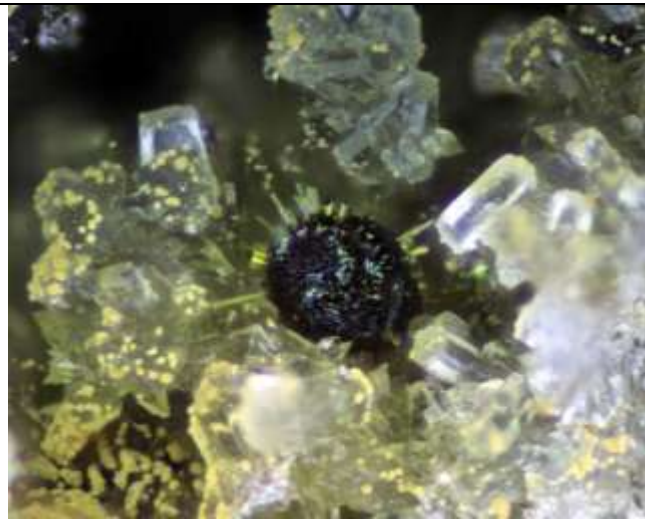
EE Smith Mine 0.4 mm whitmoreite naval mine



Palermo Mine 0.4 mm across whitmoreite navel mine.



Plume Mine 0.6 mm Whitmoreite xl mass

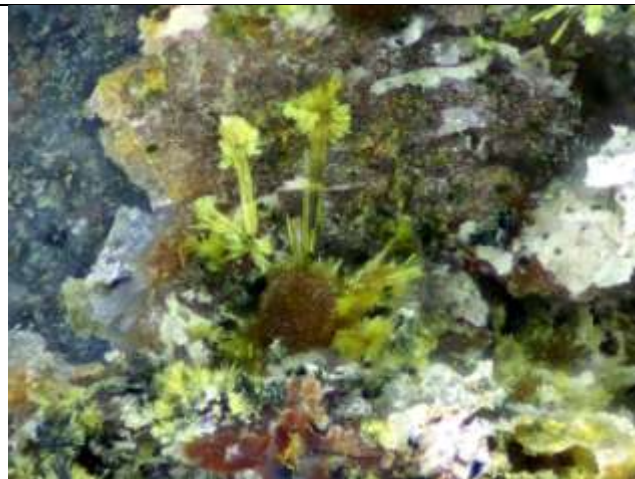


EE Smith Mine, Alexandria 0.4 mm ball with spikes

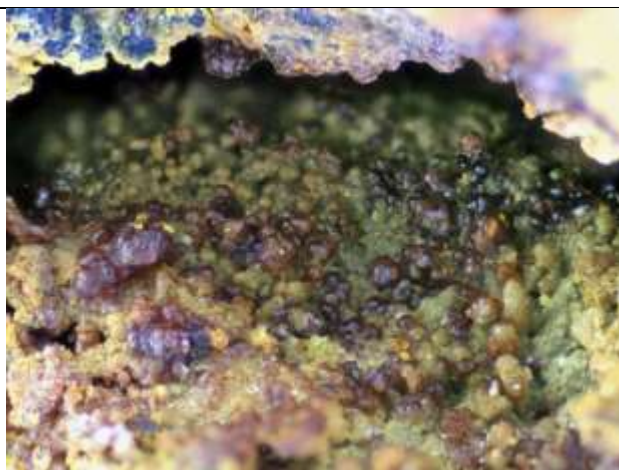




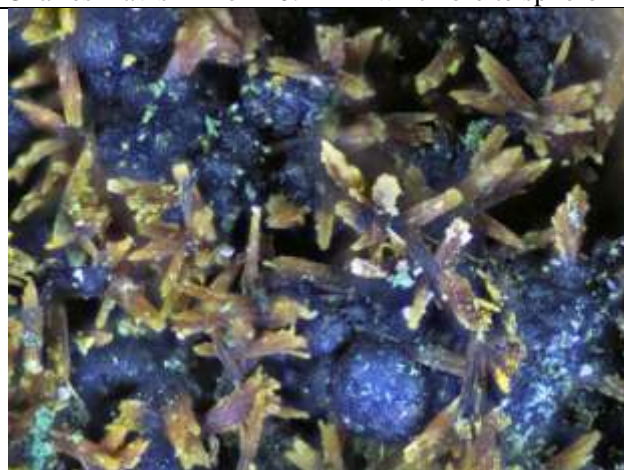
EE Smith Mine Topmost mine is 0.5 mm



Charles Davis Mine ~ 0.2 mm whitmoreite sphere



Valencia Mine 0.3 mm field of view



Valencia Mine 1.4 mm field of view