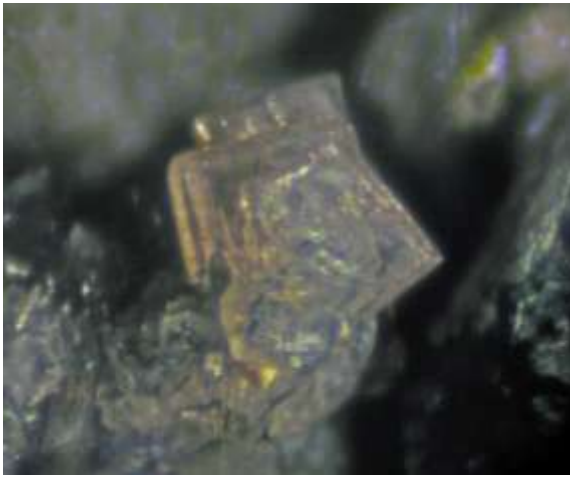


## Palermo Leucophosphate – Tom Mortimer



**Leucophosphate** 0.4 mm crystal group  
Photo through Meiji trinocular port.



**Leucophosphate** 3.3 mm crystal  
Anthony R. Kamph photo and specimen



**Leucophosphate** 0.4 mm crystal group  
Photo with Nikon Plan 10x/.025 microscope

Per Whitmore and Lawrence's book *The Pegmatite Mines Known as Palermo*, leucophosphate,  $\text{KFe}^{3+}_2(\text{PO}_4)_2(\text{OH}) \cdot 2\text{H}_2\text{O}$ , is a rare mineral at the Palermo Mine, N. Groton, NH. The text accompanying Fred Wilda's illustration on page 141 states "Leucophosphate is found in the outside rim of rockbridgeite matrix. Associated minerals include barbosalite, jahnsite, rockbridgeite and strunzite." My collection contains only a few examples. A photo of my best one is in my mindatnh.org Leucophosphate gallery. The original image is shown in the top photo, left. It is a 0.4 mm crystal group. Pretty tiny! I took this photo via the trinocular port of my Meiji scope with my Canon G9 camera. Even though Helicon imaging stacking was used, this somewhat fuzzy image was the best I could achieve.

My leucophosphate specimen compares very favorably with the one shown in the Sept-Oct 81 (vol. 56 #5) article on the Palermo Mine in *Rocks and Minerals*. This image, middle photo, was taken by Anthony Kamph, (reproduced here, with permission). My feeling is that the color rendering in this photo is a bit off; the magenta is too strong.

Recently I have been experimenting with a new photo setup for micro specimens. The setup utilizes a Nikon plan 10x/.025 microscope objective lens. This combination has produced substantially sharper results, lower photo, (a stack of 23 images processed with Helicon Focus).